



YLI ELECTRONIC

Touch Exit Button

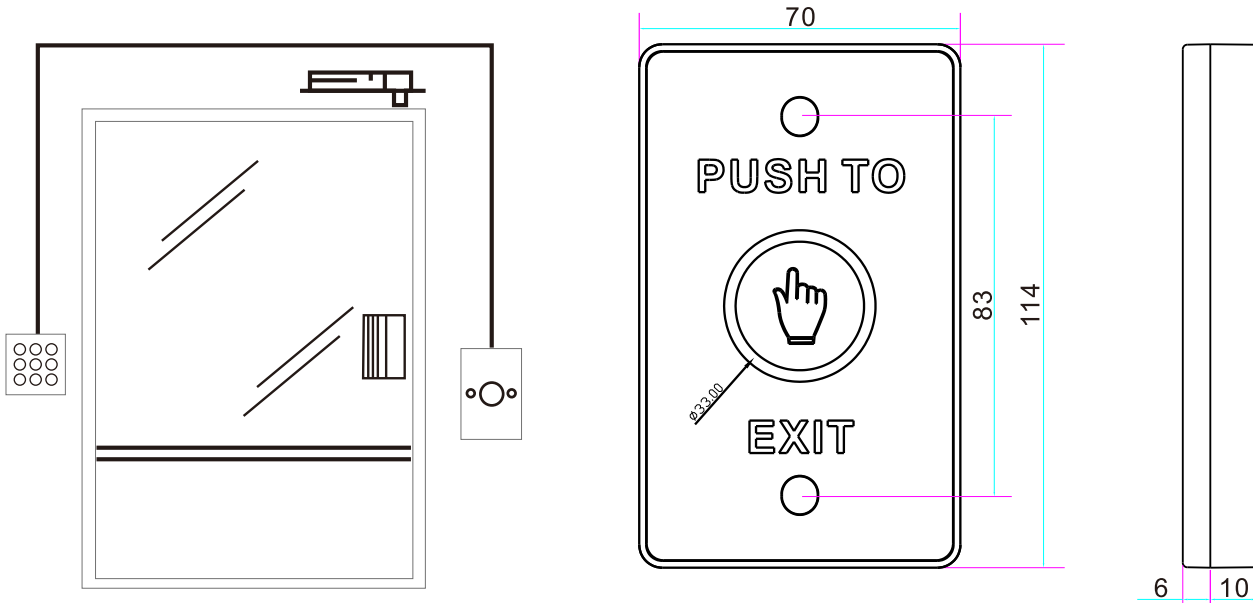
Model: TSK-830A(LED)



Specification

- Dimensions: 114Lx70Wx16H(mm)
- Voltage:12-24V
- Current: Standby 30mA,Operation: 70mA
- Output Contact: NO/NC/COM
- Current Rating: 1A@30VDC 0.5A@125VDC
- Waterproof Level: IP-68
- LED Status: Red: Standby Green : Operation
- Wire color: Red: Positive Black: Negative
Yellow: NC White: COM Green: NO
- Optional Colors: Silver ;Golden(can be customized)
- Weight: 0.12kg

Installation & Size



Wiring Diagram

- ☐ — Red — — + 12V DC
- ☐ — Black — — —
- ☐ — Yellow — — NC
- ☐ — White — — COM
- ☐ — Green — — NO